



# NEWSLETTER

*"Together, small steps create big change."*



## The Summer-Off Season is Rolling

As the days grow longer, the fireflies return, and the temperatures rise, summer has officially arrived—and with it, the hunting off-season. While FLH may not be actively hunting, there is still plenty happening to keep our members engaged.

Summer is a time to prepare for the upcoming hunting season. From workdays at our fixtures and coop building to summer riding that keeps both horses and riders fit, there are many opportunities to enjoy the camaraderie and traditions of FLH throughout the off-season.

Preparations for the new season are already well underway. We currently have four active fixtures in the Easton and Winchester, Kansas, areas, with workdays scheduled at each location throughout the summer. Please check the FLH TeamUp calendar for specific dates, and watch Slack and Facebook for announcements and reminders.

This summer, FLH is also introducing something new—**Confidence Rides** on post. These rides are designed to provide members with coaching and encouragement in a supportive, low-pressure environment. Whether you're looking to improve your jumping skills before moving into First or Second Field, introduce a young or inexperienced horse to group riding, or simply build confidence navigating varied terrain, these rides offer a great opportunity to develop both horse and rider. All Confidence Rides will be held on post.

Hound walking has also begun for the summer. These walks start from the kennels and are conducted on foot, providing members with an excellent opportunity to become familiar with the hounds and learn the proper way to handle and interact with them. Hound walks currently begin at **8:00 a.m.**, although the start time may be adjusted as temperatures rise.

We hope you'll take advantage of these summer activities and join us as we prepare for another successful hunting season. We look forward to seeing you at the fixtures, in the saddle, and with the hounds. Tally Ho!



## Changes to Mission Valley Reciprocal Policy for FLH

Mission Valley Hunt has changed their policy regarding reciprocal hunting with FLH members. Below are the key take aways.

- FLH members are no longer allowed to pay a capping fee to hunt with MVH if they have previously hunted three times in total. This does not include special events like opening and closing hunts.
- A special FLH membership is being offered at \$1080 (fees and tax) for 10 hunts per season with MVH
- This policy will not impact special events like opening and closing hunts or joint meets.

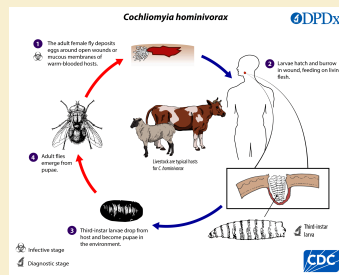
Please contact any of the FLH joint masters if you have questions or concerns.



## New World Screw Worm Update



NWS - Adult Fly



NWS - Lifecycle



NWS - Larvae

For the first time in several years, cases of **New World screwworm** have been confirmed in the United States. To date, all reported cases have occurred in Texas, primarily in the San Antonio area, with one additional case reported in a New Mexico county bordering Texas. At this time, no cases have been reported in horses.

New World screwworm can affect a variety of warm-blooded animals, including cattle, sheep, horses, dogs, and wildlife. The greatest risk occurs when an adult female fly lays eggs in an open wound or other vulnerable area on an animal. After hatching, the larvae feed on living tissue, burrowing deeper into the wound and causing severe tissue damage. Without prompt treatment, infestations can become life-threatening.

Horse owners and livestock producers can help reduce the risk of infestation by following good management practices, including:

- Inspecting animals regularly for cuts, wounds, or unusual swelling.
- Promptly cleaning and treating any open wounds.
- Using approved insect repellents or fly-control products when appropriate.
- Maintaining clean facilities and properly managing manure to reduce fly populations.

If you suspect a New World screwworm infestation, contact your veterinarian immediately. Early diagnosis and treatment are essential to preventing serious injury and limiting the spread of this pest.

## Additional Resources

- [Equine Disease Communication Center Fact Sheet on Screw Worm](#)
- [American Horse Council - Screw Worm Updates](#)
- [Centers for Disease Control - New World Screw Worm Website](#)
- [United State Department of Agriculture - New World Screw Worm - Current Status Webpage](#)

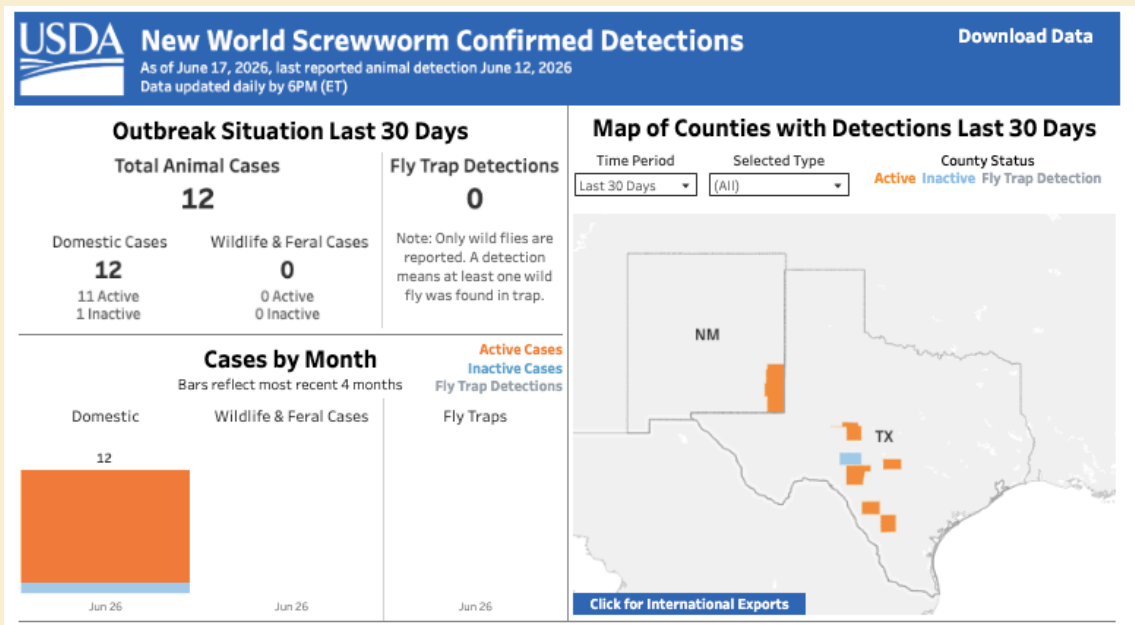
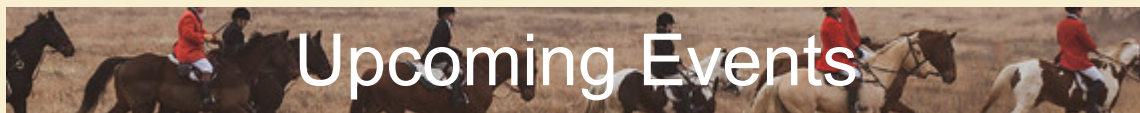


Photo Credit: USDA APHIS NWS Dashboard - [https://publicdashboards.dl.usda.gov/t/MRP\\_PUB/views/NewWorldScrewwormPublicReporting\\_17805168329840/SummaryDashboard](https://publicdashboards.dl.usda.gov/t/MRP_PUB/views/NewWorldScrewwormPublicReporting_17805168329840/SummaryDashboard)



## Upcoming Events

### Hound Walking

Saturday mornings.  
Meet at the kennels.  
8:00 AM (subject to change)

### FLH is Reclaiming the Trails!

Did you know there are over 35 miles of trails on the Fort Leavenworth instillation? Several members have been busy mapping out under utilized horse

### Summer Ride Series

July 1, 15 & 29  
August 12 & 26  
Ride time 5:00 PM  
Wainwright Arena on Post  
Potluck snack to follow (BYOB)

### LFA Meeting and Election

trails and working to clear them once again for use. Please help support this effort by joining the "trail-clean-up" channel on slack.

---

**Looking forward to seeing everyone at these events!**

---

July 27, 2026

More details to come!

---

Thank you to all the members who made it to the June 14 Quarterly Meeting. Below is a link to the slides that were presented.

[June 14 Quarterly Meeting Slide Set](#)

## Stay up to date with Slack and Team Up

Please Download and start using Team Up & Slack Apps! Team Up is the calendar and Slack will be used for communications in addition to Facebook and updates on our .org website. Please note the Group Me is not longer being used.

Questions?  
[marketing@ftleavenworthhunt.org](mailto:marketing@ftleavenworthhunt.org)

## Stay In Touch

[masters@ftleavenworthhunt.org](mailto:masters@ftleavenworthhunt.org)  
[secretary@ftleavenworthhunt.org](mailto:secretary@ftleavenworthhunt.org)  
[info@ftleavenworthhunt.org](mailto:info@ftleavenworthhunt.org)  
[marketing@ftleavenworthhunt.org](mailto:marketing@ftleavenworthhunt.org)

Wainright Riding Complex  
625 McPherson Ave  
Fort Leavenworth, KS 66027

